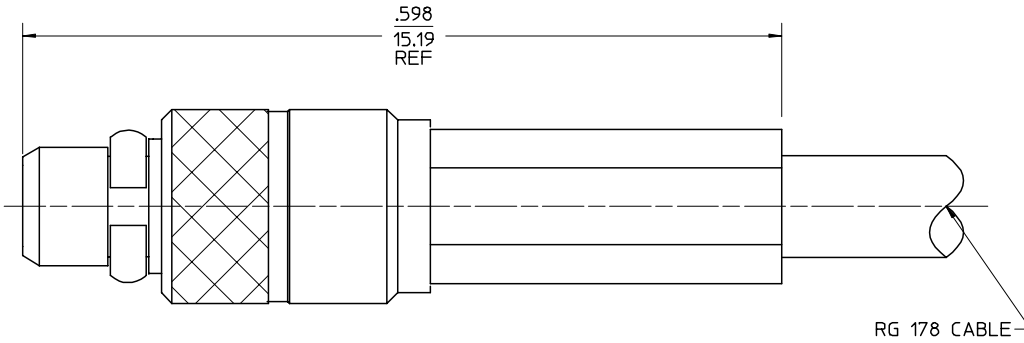


MATERIALS AND FINISHES

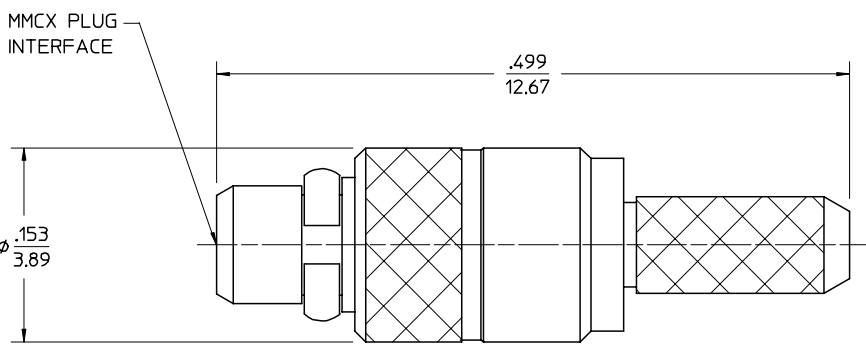
BODY BRASS  
PLATED GOLD

CONTACT BERYLLIUM COPPER  
PLATED GOLD

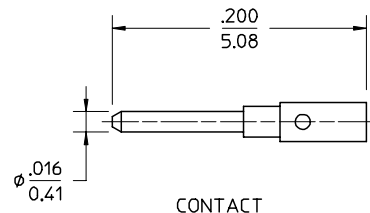
INSULATOR TEFLON



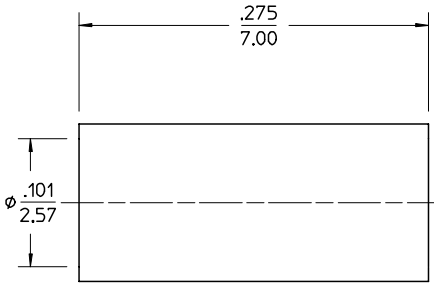
RG 178 CABLE



MMCX PLUG  
INTERFACE



CONTACT



CRIMP TUBE

AS-89678-0900	CABLE ASSEMBLY		
ES-73599-0000-0150	INTERFACE	SD-73415-0971	PER COMMERCIAL REQUIREMENTS
PS-89675-1900	ELECTRO/MECH PERFORMANCE	SD-73415-0970	PER MILITARY REQUIREMENTS
SPECIFICATION	DESCRIPTION	PART NUMBER	PLATING

CHG: BODY TO D REV. EC NO RF04-163 DRWN: JOHN JUN/04/04 CHK: JOHNSON JUN/04/04 APPR: MISEN JUN/04/04	CHG: ADDED CABLE ASSEMBLY AS-89678-0900 EC NO URF-0464 DRWN: TEF 12/28/99 CHK: TEF 12/28/99 APPR: GMH 12/28/99 CHG: NEW RELEASE	EC NO URF-0464 DRWN: TEF 11/22/99 CHK: TEF 11/22/99 APPR: GMH 11/22/99	ADDED P/N: SD-73415-0971 REMOVED MIL SPECS FROM ADDED PLATING MATERIAL AND FINISH CALLOUTS TEF 05/26/99	EC NO. RF-XXXX DRWN: XXX 00/00/00 CHK: XXX 00/00/00 APPR: XXX 00/00/00	DESCRIPTION UNLESS OTHERWISE SPECIFIED DIMS ARE INCHES AND ANGLES ARE DEGREES. 1. ✓ 63 ALL OVER. 2. NO CHATTER OR NON-UNIFORM SURFACE FINISH ALLOWED. 3. PARTS TO BE FREE OF BURRS & SHARP EDGES .005 MAX BREAK. 4. EXTERNAL THREADS TO BE ROLLED OR SINGLE POINT. 5. DIAMETERS TO BE CONCENTRIC WITHIN .003 TIR.
--	--	---	--	---	---

QUALITY SYMBOLS	GENERAL TOLERANCES: (UNLESS SPECIFIED)	SCALE	DESIGN UNITS	THIRD ANGLE PROJECTION	DIMENSIONS:
MAJOR	mm INCH	—	mm INCH	☉	mm INCH mm ONLY
CRITICAL	4 PLACES ± .0005				
	3 PLACES ± .005				
	2 PLACES ± .01				
	1 PLACE ± .1				
	ANGULAR: ±2°				
	DRAFT WHERE APPLICABLE MUST REMAIN WITHIN DIMENSIONS				

DRAWN BY & DATE TEF 02/15/99	TITLE: MMCX PLUG, STRAIGHT, CABLE RG178 MMCX-PC
CHECKED BY & DATE JOHNSON JUN/08/04	
APPROVED BY & DATE MISEN JUN/08/04	
DESIGN REVIEW XXX 00/00/00	MATERIAL NO. SEE NOTE
	DRAWING NO. SD-73415-097
	SHEET NO. 1 of 1

1	B
SHT	REV
REVISE ON CAD ONLY	
THIS DRAWING CONTAINS INFORMATION THAT IS PROPRIETARY TO MOLEX INCORPORATED AND SHOULD NOT BE USED WITHOUT WRITTEN PERMISSION.	
SIZE	B